



GLOBALHOOK®

INDEX

STANDARD HOOKS _02

C-TYPE	_02
C90-TYPE	_03
C180-TYPE	_04
V-TYPE	_05
V90-TYPE	_06
V180-TYPE	_07
CV-TYPE	_08
LC-TYPE	_09

TUBE HOOKS _10

TUBE-R	_10
---------------	-----

VERTICAL LINE HOOKS _11

VERT	_11
VERT90	_11

METRIC _12

METRIC EYEVOLTS	_12
METRIC CAPS	_12

STANDARD HOOKS

C-TYPE

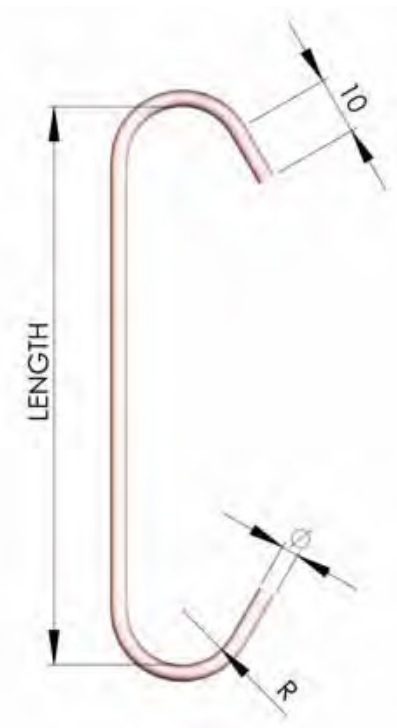
The C type hook is the most versatile hook.
Ideal to hang different-shaped pieces.



BOX QUANTITY

Length	ø 1.5	ø 2	ø 3	ø 4	ø 5	ø 6	ø 8
60	5000	5000	3000	1500	1000	800	ns
75	4000	4000	2500	1200	800	600	ns
100	3000	3000	1500	800	600	500	300
120	2000	2000	1000	600	ns	ns	ns
150	2000	1500	1000	500	500	400	250
200	2000	1500	800	500	400	300	200
250	2000	1500	800	500	300	250	150
300	1800	1200	600	400	300	250	150
350	1800	1200	600	400	250	200	125
400	1800	1200	600	400	250	200	125
450	1800	1200	600	400	250	200	125
500	1600	1100	500	350	200	150	100
600	1500	1000	500	300	175	125	75
700	1500	1000	500	300	175	125	75
800	1500	1000	500	300	175	125	75
900	1400	900	400	250	175	125	75
1000	1300	800	400	250	150	100	60

Measures in millimeters



	ø 1.5 mm	ø 2 mm	ø 3 mm	ø 4 mm
R (mm)	8	8	10	10

Ask for different diameters
from 0.6 to 16 mm and different
lengths.
Different angles are available.
Minimum quantity per order: 1 box.
Made of coppered steel from wire
1.5 mm to wire 4 mm and are also
available in other materials.
The hooks with a wire diameter
of 5 mm or more are made of
steel.

STANDARD HOOKS

C90-TYPE

The C type hook is the most versatile hook.
Ideal to hang different-shaped pieces.
The 90° changes the orientation of the hanged piece.

DESIGNATION
C90-3-100

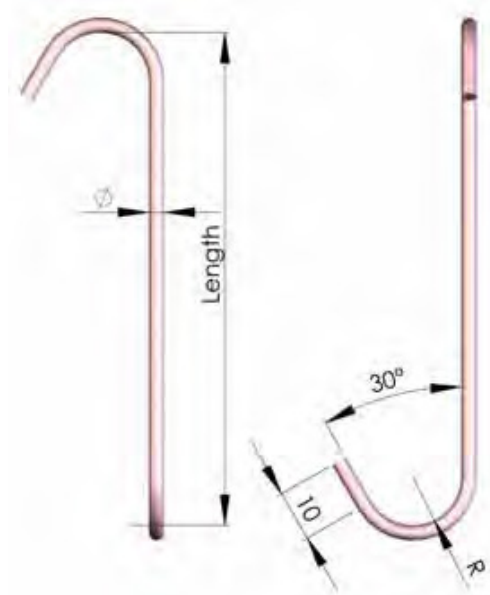
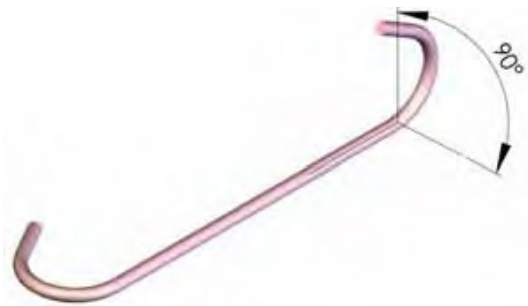
TYPE OF HOOK | LENGTH OF THE HOOK (mm)
Ø OF THE HOOK (mm)

BOX QUANTITY

Length	ø 1.5	ø 2	ø 3	ø 4	ø 5	ø 6	ø 8
60	3700	3700	2200	1100	750	600	ns
75	3000	3000	1800	900	600	450	ns
100	2200	1100	1100	600	450	375	225
120	1500	1500	700	400	ns	ns	ns
150	1500	1100	700	300	375	300	175
200	1500	1100	600	300	300	225	150
250	1500	1100	600	300	225	175	100
300	1300	900	400	300	225	175	100
350	1300	900	400	300	175	150	75
400	1300	900	400	300	175	150	75
450	1300	900	400	300	175	150	75
500	1200	800	300	200	150	100	75
600	1100	700	300	200	125	75	50
700	1100	700	300	200	125	75	50
800	1100	700	300	200	125	75	50
900	1000	600	300	100	125	75	50
1000	900	600	300	100	100	75	45

Measures in millimeters

Ask for different diameters from 0.6 to 16 mm and different lengths.
Different angles are available.
Minimum quantity per order: 1 box.
Made of coppered steel from wire 1.5 mm to wire 4 mm and are also available in other materials.
The hooks with a wire diameter of 5 mm or more are made of steel.



	ø 1.5 mm	ø 2 mm	ø 3 mm	ø 4 mm
R (mm)	8	8	10	10

STANDARD HOOKS

V-TYPE

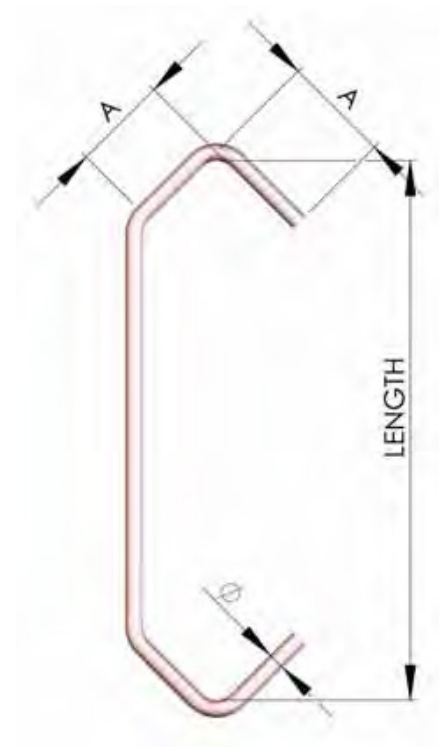
This kind of hooks give a better stability when loading than other geometries.
 The V shape provides to this hook a unique contact point with the piece. As a result, conductivity is much better than in the other hook shapes and the possibility of a coating buildup is minimized.



BOX QUANTITY

Length	ø 1.5	ø 2	ø 3	ø 4	ø 5	ø 6	ø 8
60	5000	5000	3000	1500	1000	800	ns
75	4000	4000	2500	1200	800	600	ns
100	3000	3000	1500	800	600	500	300
120	2000	2000	1000	600	ns	ns	ns
150	2000	1500	1000	500	500	400	250
200	2000	1500	800	500	400	300	200
250	2000	1500	800	500	300	250	150
300	1800	1200	600	400	300	250	150
350	1800	1200	600	400	250	200	125
400	1800	1200	600	400	250	200	125
450	1800	1200	600	400	250	200	125
500	1600	1100	500	350	200	150	100
600	1500	1000	500	300	175	125	75
700	1500	1000	500	300	175	125	75
800	1500	1000	500	300	175	125	75
900	1400	900	400	250	175	125	75
1000	1300	800	400	250	150	100	60

Measures in millimeters



	ø 1.5 mm	ø 2 mm	ø 3 mm	ø 4 mm
A (mm)	15	15	20	20

Ask for different diameters from 0.6 to 16 mm and different lengths.
 Different angles are available.
 Minimum quantity per order: 1 box.
 Made of coppered steel from wire 1.5 mm to wire 4 mm and are also available in other materials.
 The hooks with a wire diameter of 5 mm or more are made of steel.

STANDARD HOOKS

CV-TYPE

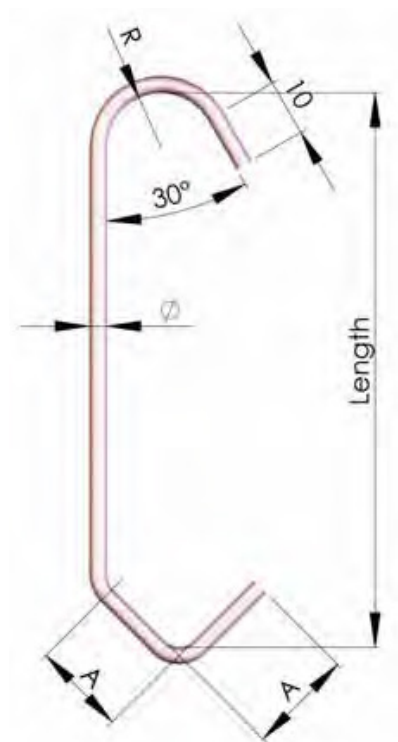
The CV type combines the features of V-type with the easy use of C-type.



BOX QUANTITY

Length	ø 1.5	ø 2	ø 3	ø 4	ø 5	ø 6	ø 8
60	5000	5000	3000	1500	1000	800	ns
75	4000	4000	2500	1200	800	600	ns
100	3000	3000	1500	800	600	500	300
120	2000	2000	1000	600	ns	ns	ns
150	2000	1500	1000	500	500	400	250
200	2000	1500	800	500	400	300	200
250	2000	1500	800	500	300	250	150
300	1800	1200	600	400	300	250	150
350	1800	1200	600	400	250	200	125
400	1800	1200	600	400	250	200	125
450	1800	1200	600	400	250	200	125
500	1600	1100	500	350	200	150	100
600	1500	1000	500	300	175	125	75
700	1500	1000	500	300	175	125	75
800	1500	1000	500	300	175	125	75
900	1400	900	400	250	175	125	75
1000	1300	800	400	250	150	100	60

Measures in millimeters



	ø 1.5 mm	ø 2 mm	ø 3 mm	ø 4 mm
A (mm)	15	15	20	20
R (mm)	8	8	10	10

Ask for different diameters from 0.6 to 16 mm and different lengths.
 Different angles are available.
 Minimum quantity per order: 1 box.
 Made of coppered steel from wire 1.5 mm to wire 4 mm and are also available in other materials.
 The hooks with a wire diameter of 5 mm or more are made of steel.

STANDARD HOOKS

LC-TYPE

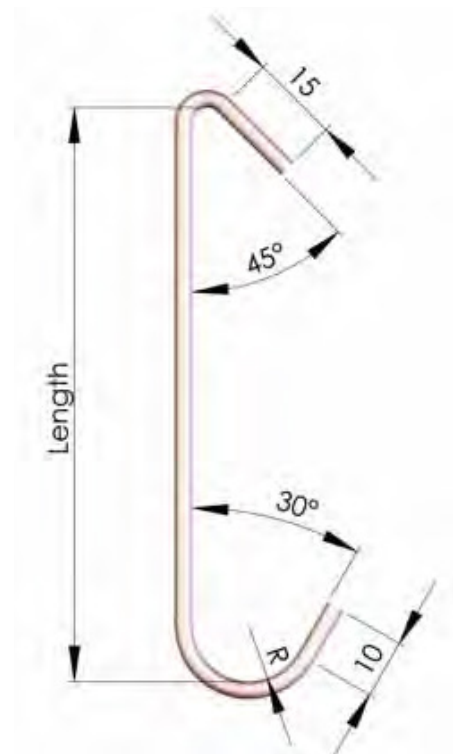
The LC type combines the strength of the L shape at the top hanging point with the features of a C type hook.



BOX QUANTITY

Length	ø 1.5	ø 2	ø 3	ø 4	ø 5	ø 6	ø 8
60	5000	5000	3000	1500	1000	800	ns
75	4000	4000	2500	1200	800	600	ns
100	3000	3000	1500	800	600	500	300
120	2000	2000	1000	600	ns	ns	ns
150	2000	1500	1000	500	500	400	250
200	2000	1500	800	500	400	300	200
250	2000	1500	800	500	300	250	150
300	1800	1200	600	400	300	250	150
350	1800	1200	600	400	250	200	125
400	1800	1200	600	400	250	200	125
450	1800	1200	600	400	250	200	125
500	1600	1100	500	350	200	150	100
600	1500	1000	500	300	175	125	75
700	1500	1000	500	300	175	125	75
800	1500	1000	500	300	175	125	75
900	1400	900	400	250	175	125	75
1000	1300	800	400	250	150	100	60

Measures in millimeters



	ø 1.5 mm	ø 2 mm	ø 3 mm	ø 4 mm
A (mm)	8	8	10	10

Ask for different diameters from 0.6 to 16 mm and different lengths.
 Different angles are available.
 Minimum quantity per order: 1 box.
 Made of coppered steel from wire 1.5 mm to wire 4 mm and are also available in other materials.
 The hooks with a wire diameter of 5 mm or more are made of steel.

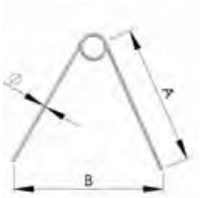
TUBE HOOKS

This kind of hooks allow to hang the piece through a hole and keep the external side of the piece free of marks after painting. Made by spring steel, this hooks use the spring effect to fix the hook with the piece.

TUBE-R

Standardized tube hooks.
The most versatile tube hooks.

TUBE-R

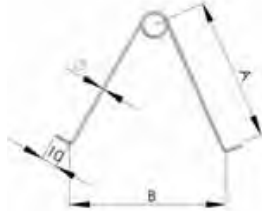


BOX QUANTITY

Ø 1	Ø 1,5	Ø 2	Ø 3
1000	1000	500	500

Measures in millimeters

TUBE-RL



BOX QUANTITY

	Ø 1	Ø 1,5	Ø 2	Ø 3
A	40	70	85	100
B	40	60	85	85

Measures in millimeters

DESIGNATION
TUBER-2

TYPE OF HOOK

WIRE DIAMETER (mm)

METRIC

METRIC EYEBOLTS

This kind of hooks fix pieces by the female metric thread of a piece.

DESIGNATION
EYE-M10

TYPE OF HOOK | KIND OF THREAD

BOX QUANTITY

	Ø (mm)	A (mm)	
EYE-M3	500	5	10
EYE-M4	400	6	10
EYE-M5	200	8	10
EYE-M6	100	10	10
EYE-M8	50	12	12
EYE-M10	25	14	14
EYE-M12	25	16	16



METRIC CAPS

This kind of hooks fix pieces by the male metric thread of a piece.

DESIGNATION
CAP-M10

TYPE OF HOOK | KIND OF THREAD

BOX QUANTITY

	Ø (mm)	A (mm)	
CAP-M3	500	3	5
CAP-M4	400	3	8
CAP-M5	200	4	13
CAP-M6	100	5	15
CAP-M8	50	6	15
CAP-M10	25	8	20
CAP-M12	25	10	25
CAP-M14	25	12	25
CAP-M16	25	14	25
CAP-M18	25	16	25
CAP-M20	25	18	25





Global Mask International, S.L.
La Coma, 43 · P.I. Santa Anna
08272 Sant Fruitós de Bages
Barcelona (Spain)
T. (+34) 931 130 750
info@global-mask.com
www.global-mask.com



Web



Catalogue

