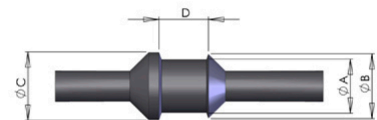


## Silicone Leading Pull Plug

Powder Coating, E-Coating, anodizing and plating. To mask the first and the last thread or the chamfers (one or both chamfers). Pull plug fitting system. 315°



Part number	Suitable for	A (mm)	B (mm)	C (mm)	D (mm)	E (mm)	Units/bag
LT200-M4	M4	4,1	5,1	7,0	7,1	40,4	500
LT200-M6	Ø6	5,6	6,6	8,6	7,6	47,8	500
LT200-M8	M8	7,1	8,6	10,2	8,4	52,1	250
LT200-M10	Ø10	9,1	11,2	12,2	9,7	48,8	250
LT200-M12	Ø11	10,7	12,7	13,7	11,2	54,1	100
LT200-M16	Ø15	14,2	17,3	17,3	14,7	59,2	100