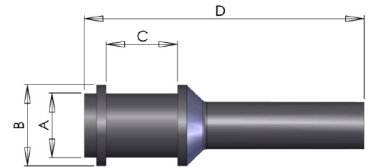
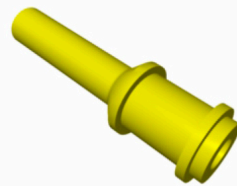


Silicone Double Flange Pull Plug

Powder Coating, E-Coating, anodizing and plating. Reusable. To be fit by pulling. To mask the both chambers of a through hole. 315°



Part number	Color	Suitable for	A (mm)	B (mm)	C (mm)	D (mm)	Units/bag
DFPP-M6	Dark green	Ø6	5,0	7,8	6,2	33,0	1.000
DFPP-M8	Rusty	Ø8	6,7	9,5	7,9	34,0	1.000
DFPP-M10	Green	Ø9	8,5	11,3	9,0	35,0	500
DFPP-M12	Purple	Ø10	10,3	13,0	11,6	45,0	250
DFPP-M16	White	Ø14	13,5	17,0	14,0	50,0	250
DFPP-M20	Dark blue	Ø18	17,0	21,0	18,0	58,0	100